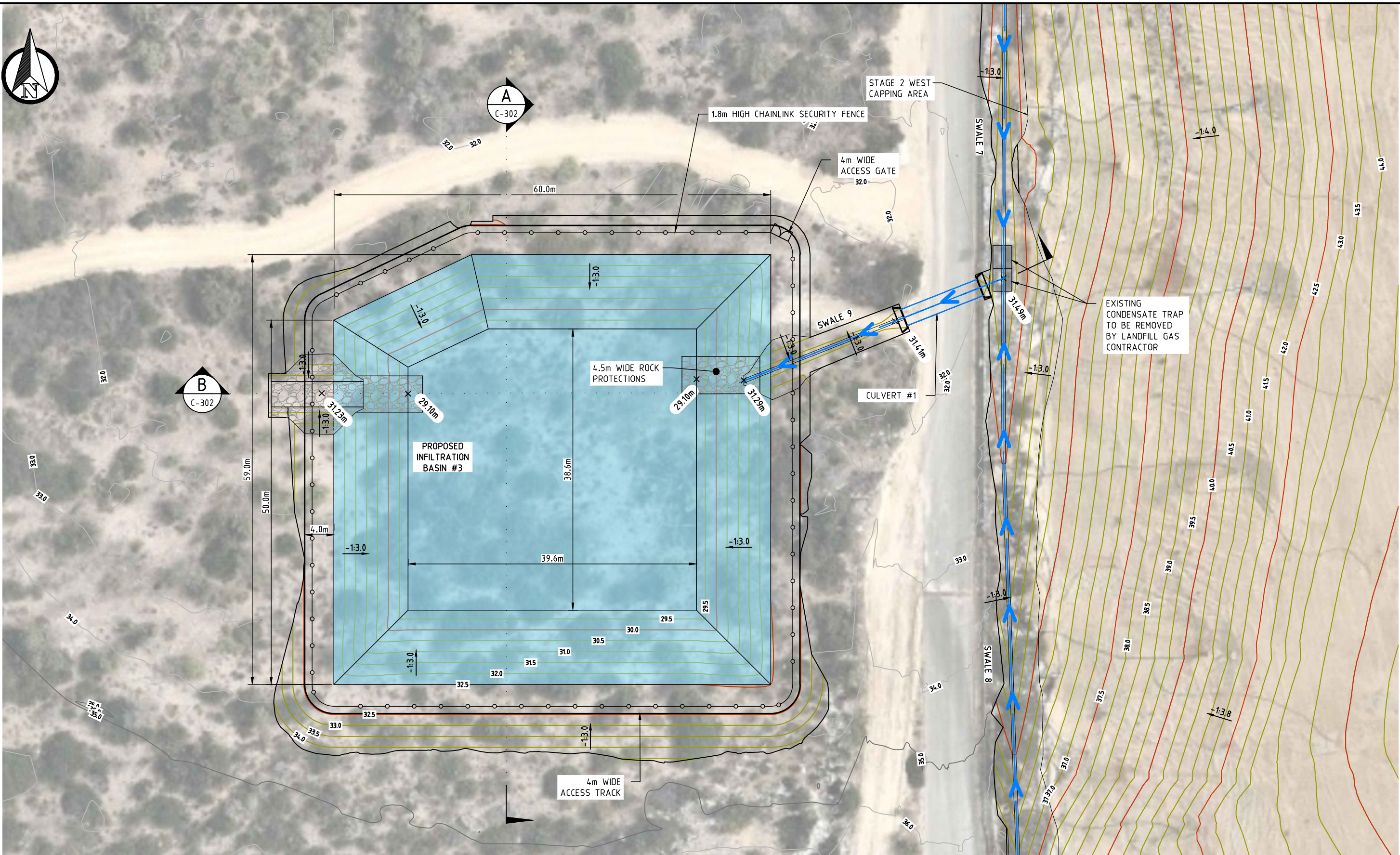
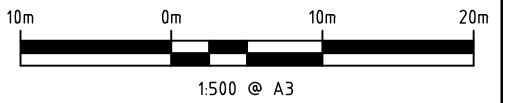


Printed by Armand Bestier on 07.09.2023 11:37 AM
 FILENAME: \\SERVER\TALIS\SECTIONS\WASTE\PROJECTS\TW2021\TW21026 - TAMALA PARK MRC CLOSURE PLAN\DRAWINGS\TW23015 - SW_SET.DWG



PRELIMINARY ONLY
NOT FOR CONSTRUCTION



SURVEY DATE: 17 FEBRUARY 2021
 VERTICAL DATUM: AUSTRALIAN HEIGHT DATUM
 HORIZONTAL DATUM: MGA 94 ZONE 50



ASSET
 ENGINEERING
 ENVIRONMENT
 NOISE
 SPATIAL
 WASTE



NOTES

1. This drawing is the property of Talis Consultants Pty Ltd. It is a confidential document and must not be copied, used, or its contents divulged without prior written consent.
2. DO NOT SCALE, use figured dimensions only, if in doubt please contact Talis Consultants.
3. Parts of this drawing is intended to be IN COLOUR. Black & White Printing may cause errors or omissions. If this text is not GREEN, please contact Talis Consultants

No.	Date	Drawn	Checked	Amendment / Issue	App.
A	07.09.2023	YJ	AB	PRELIMINARY ISSUE	

Project: **TAMALA PARK STAGE 2 WEST CAPPING WORKS**

Title: **SURFACE WATER MANAGEMENT LAYOUT**

Scale: AS SHOWN @ A3	Date: 07.09.2023	
Drawn: YJ	Checked: AB	Approved:
Job No: TW23015	Drg. No: C-101	Rev:
Filename: TW23015 - SW_SET.DWG		